

Tissue Services

CorneaGen is committed to providing you with the highest quality tissue and resources needed to provide your patients with the care they need from the most experienced technicians in the industry. Our state-of-the-art regional laboratories provide the most innovative and advanced processing methods, seven days a week.

Tissue Customization & Innovation

Precision Cut Corneal Tissue

CorneaGen offers a comprehensive portfolio of corneal transplant tissue processed with industry-leading accuracy, compliant to regulations established by the FDA and EBAA.

Preference Specification

You get what you request. Customize your request with your preference for tissue thickness, age range, and cell count.

Nano-Thin™ DSAEK

At less than 60 microns, Nano-Thin™ DSAEK is the thinnest DSAEK tissue available.

Ampho B

Most tissue types, including all pre-cut CorneaGen tissue, are now available with Amphotericin B.

Pre-Punched Grafts

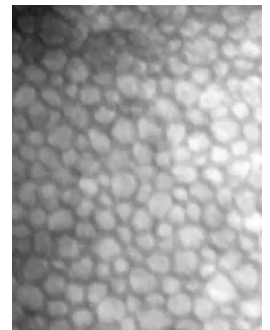
These grafts come pre-stained and ready to place in the insertion device for easier and faster DMEK procedures.

Pre-Loaded DMEK Grafts

Graft comes pre-punched, stained, marked and pre-loaded in the Geuder Glass Cannula for DMEK, simplifying DMEK and saving time in the O.R.



Pre-Loaded DMEK Graft in the Geuder Glass Cannula



Specular Microscopy

For more information or to order, please contact us at 844-526-7632 or visit www.CorneaGen.com

CorneaGen™

Tissue Services

Dependable Service

Superior Tissue Processing

Our state-of-the-art laboratories regularly process more corneas than any other U.S. eye bank with industry-leading cut accuracy.

Consistent & Dependable

You can be assured that the tissue you order is delivered promptly and meets your precise expectations.

Real-Time Customer Service

Going the extra mile to answer questions and tackle challenges together 24/7. Contact us at (877) 682-8502.

Innovative Products

From the new Geuder Pre-Loaded Glass Cannula for DMEK to the EndoSerter® and beyond, we are committed to developing and bringing products to the market that transform how corneal surgeons treat the cornea.



Geuder Pre-Loaded* Glass Cannula for DMEK

Pre-loaded with DMEK tissue and ready to insert. Optimized with an ergonomically designed transportation cartridge allowing easy removal of the cannula. The consistent incision size allows for gentle and controlled injection into the anterior chamber. Pre-loaded saves time in the O.R.

**Geuder Glass Cannula for DMEK is available with or without pre-loaded tissue.*

Reimbursement Assistance

Support Services

Ensure you are reimbursed properly with help from NMD HealthCare consulting.

Tissue Processing Code & Billing Primer

The Centers for Medicare and Medicaid Services treat eye bank tissue processing fees for keratoplasty as a “pass through” expense paid at the invoice price for the transplant facility using HCPCS code V2785.



EndoSerter®

The EndoSerter® is a unique single-use, disposable device used to implant donor allograft tissue during DSAEK procedures.

- Consistent, Controlled Placement of Donor Tissue
- Integral Irrigation
- Single 4mm Incision